

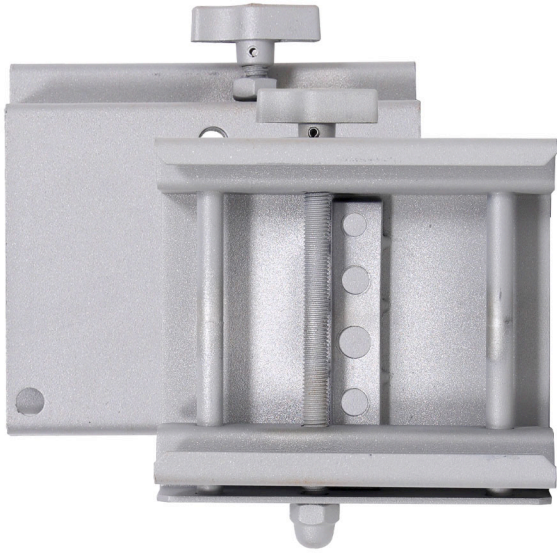
TRUSS TECH

Tent Clamp

TT-TC100S

TT-TC100B





WLL
30 - 100 Kg



Beam size
40-130 mm



Dimensions
168 x 150 x 56 mm

WLL	30 - 100 Kg (depends on the mounting position)
Dimensions	168 x 150 x 56 mm
Thickness	3 mm
Weight	1.4 Kg
Beam size	40 - 130 mm
Mounting Threads	M10, M12, M14
Material	Metal
Color	Silver, Black

